

Class B/P CDL Pre-Trip Inspection

School Bus

The purpose of this inspection is to make sure the vehicle is safe to operate, and to see if you have the proper knowledge and skills to inspect your vehicle before putting it in service. You may have to walk around the vehicle and point to or touch each item and explain to the examiner what you are checking and why. You will not have to crawl under the hood or under the vehicle.

FRONT OF THE BUS

Clearance Lights:

- ☐ Proper color
- ☐ Working
- ☐ Not broken
- ☐ Not cracked

Warning Lights:

- ☐ Proper color
- ☐ Working
- ☐ Not broken
- ☐ Not cracked

Windshield:

- ☐ Clean
- ☐ Not broken
- ☐ Not cracked

Windshield Wipers:

- ☐ In good condition
- ☐ Working properly

Hood:

- ☐ Not damaged
- ☐ Not broken
- ☐ In good condition
- ☐ Securely locked

Grill:

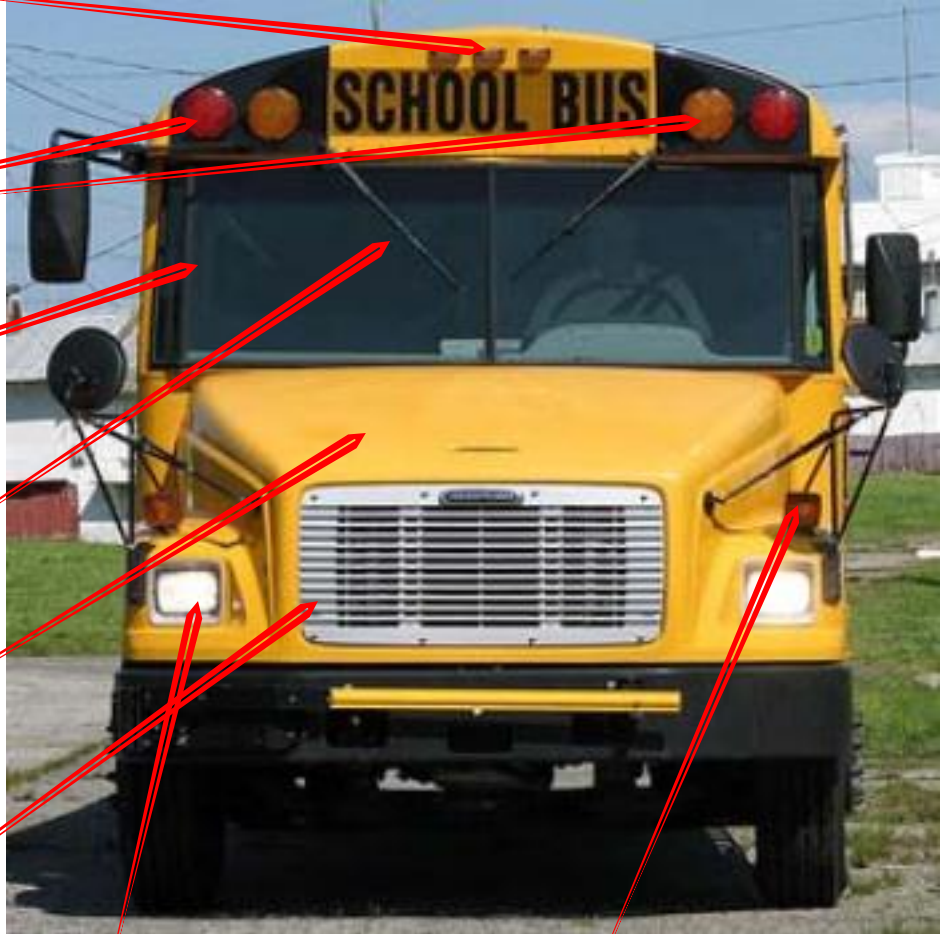
- ☐ Must be present
- ☐ Securely Mounted
- ☐ Not broken
- ☐ In good condition
- ☐ Clean

Head lights:

- ☐ Must be clear
- ☐ Not broken
- ☐ Not damaged
- ☐ In good condition
- ☐ Working properly

Turn Signals: also emergency flashers

- ☐ Must be clear
- ☐ Not broken
- ☐ Not damaged
- ☐ Color must be amber or orange
- ☐ In good condition
- ☐ Working properly



Mirrors:

(Rear view, Cross-over & Blind spot)

- ☐ Must be clean
- ☐ Not broken
- ☐ Properly adjusted
- ☐ Mirrors brackets must be well mounted

Bumper:

- ☐ In good condition
- ☐ Well mounted to the frame
- ☐ No missing parts

Crossing Arm:

- ☐ In good condition
- ☐ Well mounted to the bumper
- ☐ No missing parts
- ☐ Working

Registration Plate (If equipped):

- ☐ Must be held tight to the bumper
- ☐ Clean and visible
- ☐ Sticker must be valid



Leaks:

(The leaks can be two kinds: Oil – from transmission and engine and Fluids – from power steering system and cooling system – antifreeze leaks)

- ☐ Look for puddles on the ground
- ☐ Look for dripping fluids on underside of engine and transmission
- ☐ Must be no leaks.

FRONT WHEELS

Tires:

- ☐ Do not use recap
- ☐ No bubbles
- ☐ No cuts on it
- ☐ No space between rims and tires.
- ☐ Air pressure must be 80-100 psi
- ☐ On the front tire's depth of tread must be of 4/32 of an inch

Rim:

- ☐ Not bent
- ☐ Not cracked
- ☐ No welding repairs

Lug Nuts:

- ☐ None are missing
- ☐ Tight – no shiny threads, or rust trails



Outer Hub Oil Seal:

- ☐ Not leaking
- ☐ No missing bolts
- ☐ Proper oil level

Valve stem:

- ☐ No cuts
- ☐ No damages
- ☐ No missing.



FRONT BRAKES

Hoses and Lines:

- ☐ Mounted securely
- ☐ Not leaking
- ☐ Not cracked or frayed

Chamber:

- ☐ Mounted securely
- ☐ Not dented or damaged
- ☐ Not leaking

Slack Adjuster:

- ☐ No more than 1 inch of free play at the push rod with the brakes released
- ☐ Not bent, broken, loose, or missing parts

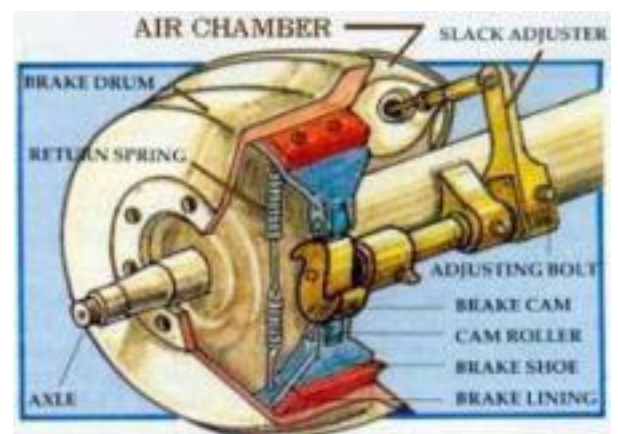


Drums:

- ☐ Not cracked, broken, or dented
- ☐ No oil leaking from inner oil seal, free of debris

Linings:

- ☐ No cracked, broken or missing parts
- ☐ Not less than 1/4 inch in thickness



FRONT SUSPENSION

Shock Absorber:

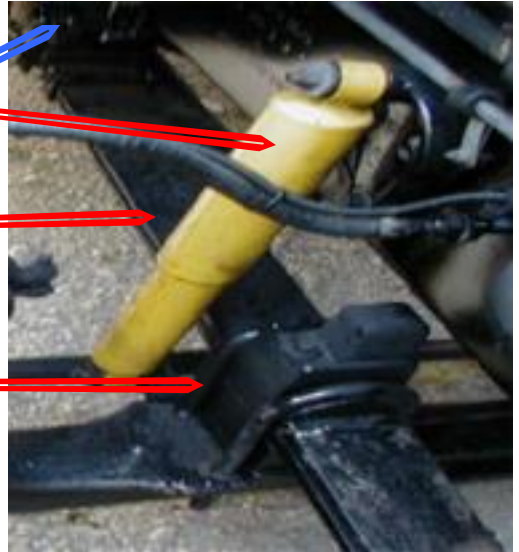
- ☐ Mounted securely
- ☐ Not bent or dented
- ☐ Not leaking

Leaf Springs:

- ☐ Not shifted or out of place
- ☐ Not cracked, broken or missing

Spring Mounts:

- ☐ Mounted securely - front, back, and U-bolts
- ☐ Not cracked or broken



ENGINE COMPARTMENT - DRIVER SIDE

Radiator:

- ☐ Radiator cap – closed, no sign of leak
- ☐ Check antifreeze for level and condition
- ☐ Hoses attached, not cracked and not leaking

Air Compressor:

- ☐ Mounted securely
- ☐ No missing bolts or parts
- ☐ No air leaks at lines

Compressor Belt:

- ☐ No more than 3/4 inch of play
- ☐ Not cracked or frayed

Power Steering Reservoir:

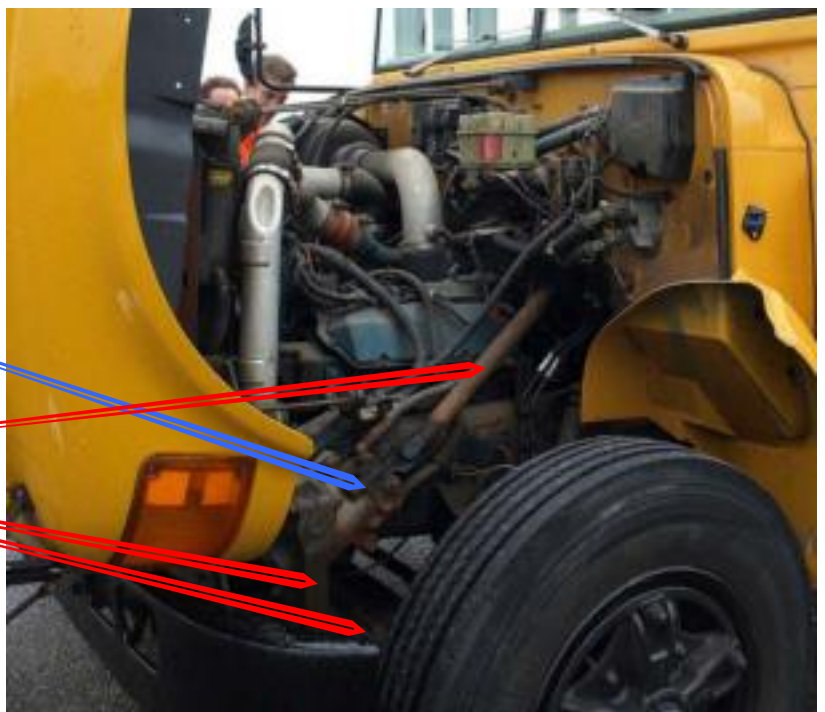
- ☐ Mounted properly
- ☐ Hoses attached and not leaking
- ☐ Check for level and condition

Steering Gear Box:

- ☐ Mounted properly
- ☐ No missing parts, nuts or bolts
- ☐ Lines and hoses not leaking or broken

Steering Linkage:

- (Pitman arm, Drag link, Steering Column, Steering knuckle)
- ☐ Not cracked, bent or broken
 - ☐ Castle nuts and cotter pins
 - ☐ Not missing and in place



Frame:

- ☐ Not cracked, or damaged
- ☐ No illegal welds

Exhaust System:

- ☐ Securely mounted
- ☐ Not dented or damaged
- ☐ Not leaking

ENGINE COMPARTMENT - PASSENGER SIDE

Water Pump:

- ☐ Mounted Securely
- ☐ No missing bolts or parts
- ☐ Hoses attached securely
- ☐ No leaking hoses or water pump

Belts

- ☐ No more than $\frac{3}{4}$ inch of play
- ☐ Not cracked, frayed, or damaged

Alternator:

- ☐ Mounted securely
- ☐ No missing bolts or parts
- ☐ Wires good connections, not frayed

Belts

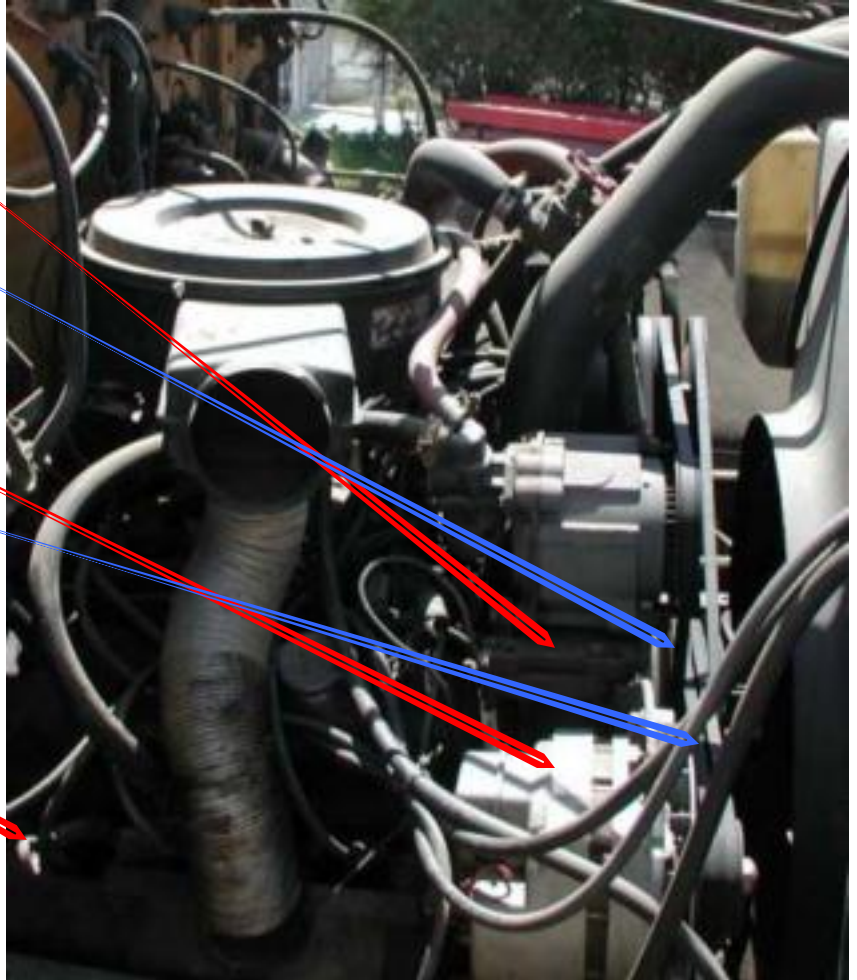
- ☐ No more than $\frac{3}{4}$ inch of play
- ☐ Not cracked, frayed, or damaged

Oil Level:

- ☐ Check the level and condition with the dip stick

Hoses and Wiring:

- ☐ Not cracked, frayed, or broken
- ☐ Belts no more than $\frac{3}{4}$ inch of play
- ☐ Hoses not leaking



LEFT (DRIVER) SIDE OF THE BUS

Stop Arms:

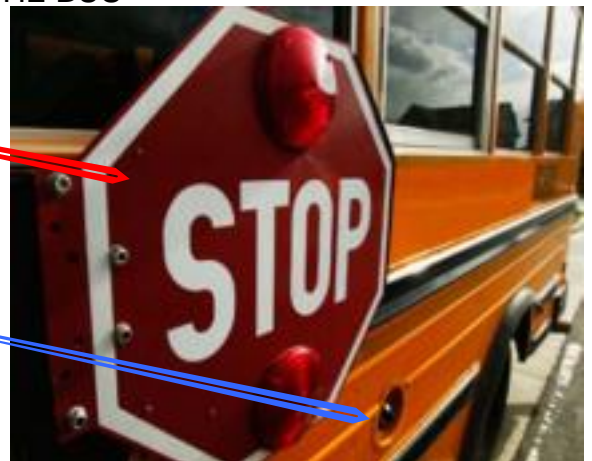
- ☐ Securely attached to the wall
- ☐ Lights not broken
- ☐ Properly working

Fuel tank:

- ☐ Cap must be locked while driving
- ☐ No leaks

Under Vehicle:

- ☐ No leaks
- ☐ No low hanging wires



Battery:

- ☐ No leaks from battery
- ☐ No corrosion on the terminals
- ☐ Door securely locked

Side Windows:

- ☐ Clean
- ☐ Not broken
- ☐ Not cracked

Emergency Exit:

- ☐ Clean
- ☐ Not broken
- ☐ Not cracked

Clearance Lights:

- ☐ Proper color
- ☐ Working
- ☐ Not broken
- ☐ Not cracked



REAR (DRIVE) WHEELS

Tires:

- ☐ Can be recap (We must be sure that are not any separation between recap and original tire.)
- ☐ No bubbles
- ☐ No cuts on it
- ☐ No space between rims and tires.
- ☐ Air pressure must be 80 - 100 psi
- ☐ The front tire's depth of tread must be 2/32 of an inch
- ☐ No any objects between wheels, not any stones, not any bottles.

Lug Nuts:

- ☐ None are missing
- ☐ Tight – no shiny threads, or rust trails

Rim:

- ☐ Not bent
- ☐ Not cracked
- ☐ No welding repairs

Outer Hub Oil Seal:

- ☐ Not leaking
- ☐ No missing bolts
- ☐ Proper oil level

Valve stem:

- ☐ No cuts
- ☐ No damages
- ☐ None missing



Space:

- ☐ Check for objects between wheels
- ☐ Check for proper spacing



Splash Guards:

- ☐ Mounted properly
- ☐ Not missing, ripped, or torn

DRIVE AXLE SUSPENSION

Control Arm Mount:

- ☐ Mounted securely
- ☐ Not bent, broken, or damaged

Control Arm:

- ☐ Mounted securely
- ☐ Not cracked or broken

Shock Absorber:

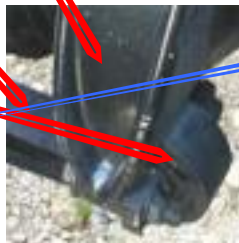
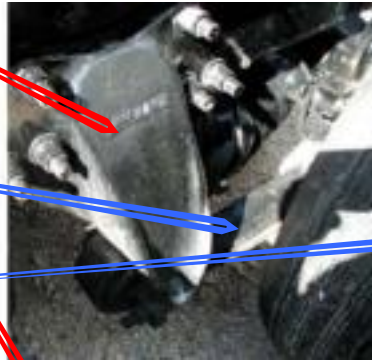
- ☐ Mounted securely
- ☐ Not bent, dented, or leaking

Torsion Bar:

- ☐ Mounted Securely
- ☐ Not bent, broken, or damaged

Air Bags (If equipped):

- ☐ Mounted securely
- ☐ Not leaking



DRIVE BRAKES

Hoses and Lines:

- ☐ Mounted securely
- ☐ Not leaking
- ☐ Not cracked or frayed

Chamber:

- ☐ Mounted securely
- ☐ Not dented or damaged
- ☐ Not leaking

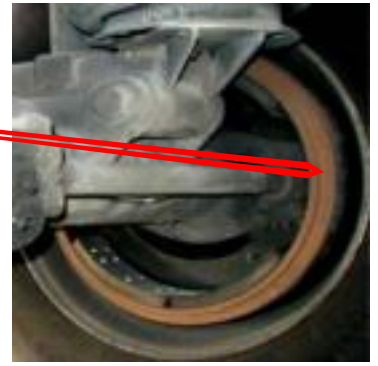
Slack Adjuster:

- ☐ No more than 1 inch of free play at the push rod with the brakes released
- ☐ Not bent, broken, loose, or missing parts



Drums:

- ☐ Not cracked, broken, or dented
- ☐ No oil leaking from inner oil seal, free of debris



Do the same check of the rear wheels on the passenger side.

REAR OF THE BUS

Clearance Lights & Reflectors:

- ☐ Proper color
- ☐ Working
- ☐ Not broken
- ☐ Not cracked

Warning Lights:

- ☐ Proper color
- ☐ Working
- ☐ Not broken
- ☐ Not cracked

Reversing Lights (Backup Lights):

- ☐ Proper color (White)
- ☐ Working
- ☐ Not broken
- ☐ Not cracked

Turn Signals:

(Two functions – turn signal and emergency flasher)

- ☐ Must be clear
- ☐ Color must be amber or orange
- ☐ Not damaged
- ☐ In good condition.
- ☐ Working properly

Emergency Door:

- ☐ Must be in a good condition
- ☐ The doors may be opened and closed easily
- ☐ Door lock handle in a good condition, well mounted to the door
- ☐ Windows must be clean, not broken without cracks and in good condition.

Registration Plate:

- ☐ Must be held tight to the bumper
- ☐ Clean and visible
- ☐ Sticker must be valid

Bumper:

- ☐ In good condition
- ☐ Well mounted to the frame
- ☐ No missing parts



RIGHT (PASSENGER) SIDE OF THE BUS

Side Windows:

- ☐ Clean
- ☐ Not broken
- ☐ Not cracked

Emergency Exit:

- ☐ Clean
- ☐ Not broken
- ☐ Not cracked

Clearance Lights:

- ☐ Proper color
- ☐ Working
- ☐ Not broken
- ☐ Not cracked

Entrance Door:

- ☐ Not broken or damaged
- ☐ The doors may be opened and closed easily
- ☐ Window must be clean, not broken without cracks, and in good condition

Steps:

- ☐ Must not be broken
- ☐ Clean
- ☐ Free of oil, grease, snow and ice

Step's Lights:

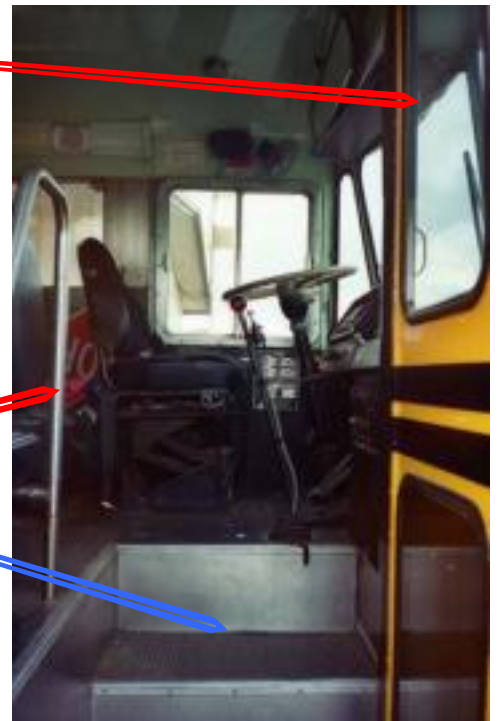
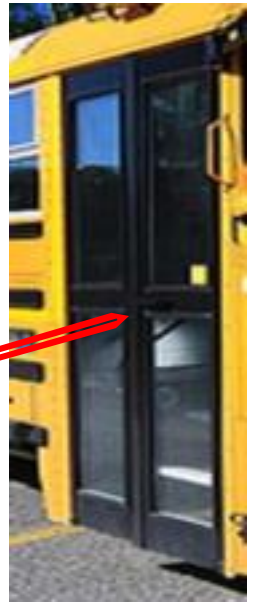
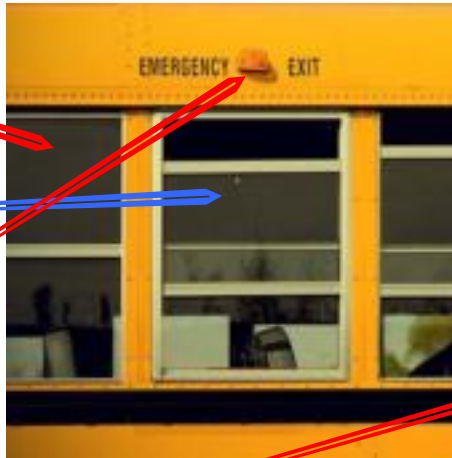
- ☐ Working
- ☐ Not broken
- ☐ Not cracked

Hand Rails:

- ☐ Securely mounted
- ☐ Clean

Locking Arm:

- ☐ No missing parts
- ☐ Operates smoothly
- ☐ In good condition
- ☐ Working properly
 - (If door is open – warning lights are on
 - If door is closed – warning lights are off)



INSIDE INSPECTION

Doors

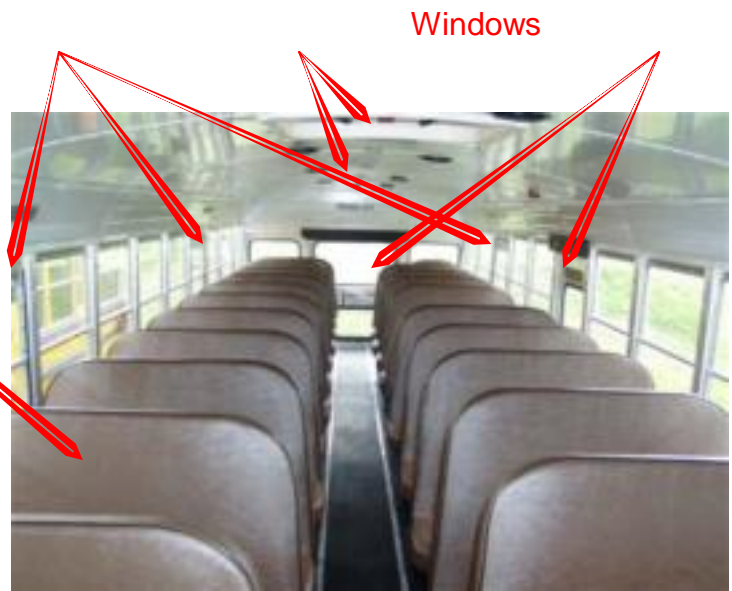
Seats:

- ☐ Must be not broken or damaged
- ☐ Clean and in good condition
- ☐ Seats frame - securely attached to the floor

Emergency Exits:

(Seven emergency exits: 2-door, 3-window, 2-roof hatches)

- ☐ In good condition
- ☐ Opens freely
- ☐ The buzzers work (when exit is open)



Windows

Roof

IN CAB INSPECTION

Emergency Equipment:

1. Spare minimum three electrical fuses
(unless vehicle has circuit breaker)

2. Three reflective triangles

- ☐ Must be red and in good condition

3. Fire extinguisher

- ☐ Must be ABC or BC type
- ☐ Fully charged
- ☐ Safety pin must be present
- ☐ Sticker must be valid
- ☐ Securely mounted



Safety Belt:

- ☐ Latches securely
- ☐ Mounted securely

Steering Wheel:

- ☐ No more than 10 degrees or 2 inches of free play

Clutch pedal (If equipped):

- ☐ Engages and disengages smoothly
- ☐ Free play maximum 1.5 inch
- ☐ Rubbered

Foot (Service) brake:

- ☐ No stick to the floor
- ☐ Rubbered

Accelerator:

- ☐ Cannot stick to the floor

Shifter:

- ☐ Moves in and out of gear properly
- ☐ Range selector works

Water Temp Gauge:

- ☐ Gauge is working (170 – 210 degrees)

Oil Pressure Gauge (If equipped):

- ☐ Gauge is working properly
- ☐ Normal oil pressure (20 - 45 PSI)
- ☐ Check that the warning light goes out

Ammeter/voltmeter (If equipped):

- ☐ Gauge shows 12 – 14 volts

Lighting Indicators:

- ☐ Left and right turn signal
- ☐ 4-WayFlashers
- ☐ High beam indicator

Horns:

- ☐ Works properly

Heater & Defroster:

- ☐ Move switch from heat to defrost
- ☐ Check for air flow

Windshield:

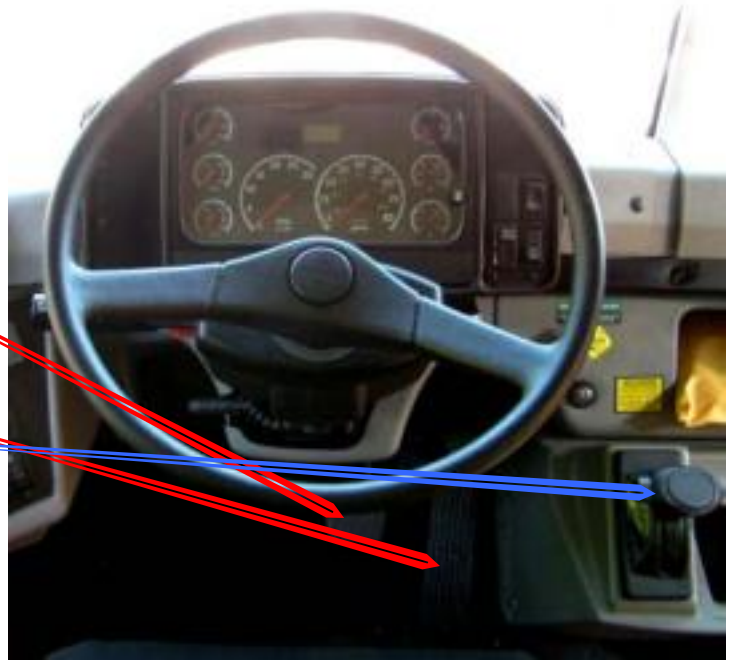
- ☐ Clean and free of obstruction
- ☐ Not cracked or broken

Wipers & Washer:

- ☐ Working
- ☐ Mounted securely to wiper arm
- ☐ Rubber not torn
- ☐ Washer sprays properly

Mirrors:

- ☐ Clean
- ☐ Adjusted



CHECK SERVICE, EMERGENCY AND PARKING BRAKES

Air leak test (static)

1. Air pressure must be at maximum (120-130psi)
2. Transmission: 1st gear
3. Turn engine OFF
4. Release parking brakes (yellow knob IN)
5. Do not touch brake pedal, wait one minute, check air pressure loss is no more than 2 psi

Air leak test (applied)

1. Air pressure must be minimum of 90psi
2. Transmission: 1st gear
3. Engine is OFF
4. Parking brakes released (yellow knob IN)
5. Depress and hold brake pedal one minute air leakage must be not more than 3 psi

Low pressure warning device test

1. Air pressure must be maximum (120-130 psi)
2. Transmission: 1st gear
3. Engine is OFF, ignition is ON
4. Release parking brakes (yellow knob IN)
5. Pump brake pedal, release (fan down)
 Buzzer + Red light on by 60 psi



Spring brake pop-out test

1. Air pressure must be minimum 60 psi
2. Transmission: 1st gear
3. Engine is OFF
4. Parking brakes released (yellow knob IN)
 - ☐ Pump brake pedal (fan DOWN)
 - ☐ Parking brakes (yellow) knob must pop-out between 20-40 psi

Slack adjuster check

1. Park on level ground.
2. Apply parking brakes.
3. Put transmission in first gear.
4. Turn engine OFF and put key in the pocket.
5. Block the wheels (place chock)
6. Release parking brakes.
7. Check free play on slack adjuster manually.
 If it is more than 1 inch, then must be adjusted.